

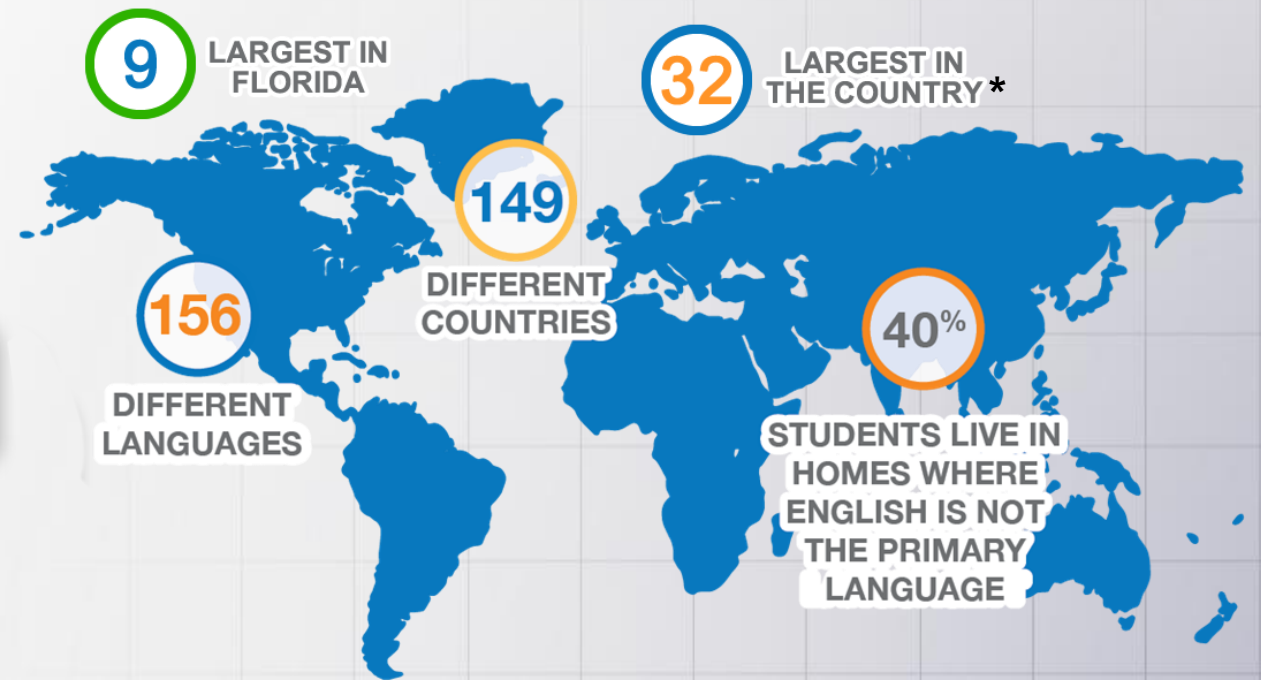
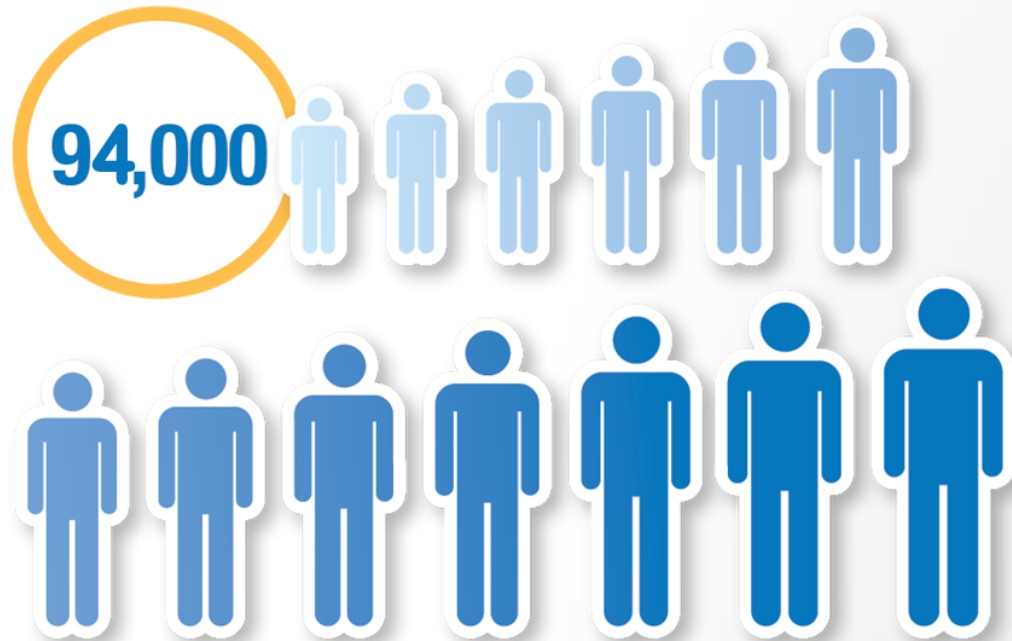
<https://www.youtube.com/watch?v=csxDo-eTopg>

# School District of Lee County, Since 1887



Source: The First 100 Years  
Lee County Public Schools, 1887-1987

# District Statistics

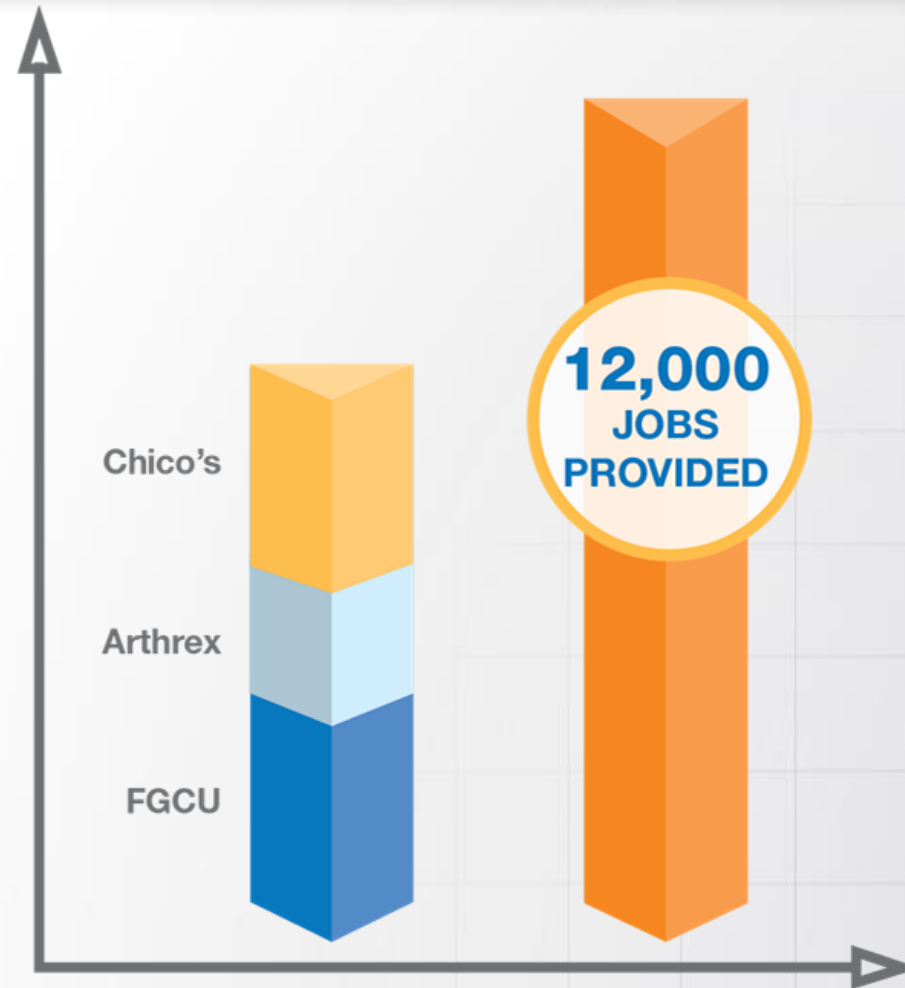


\* Source: American School & University

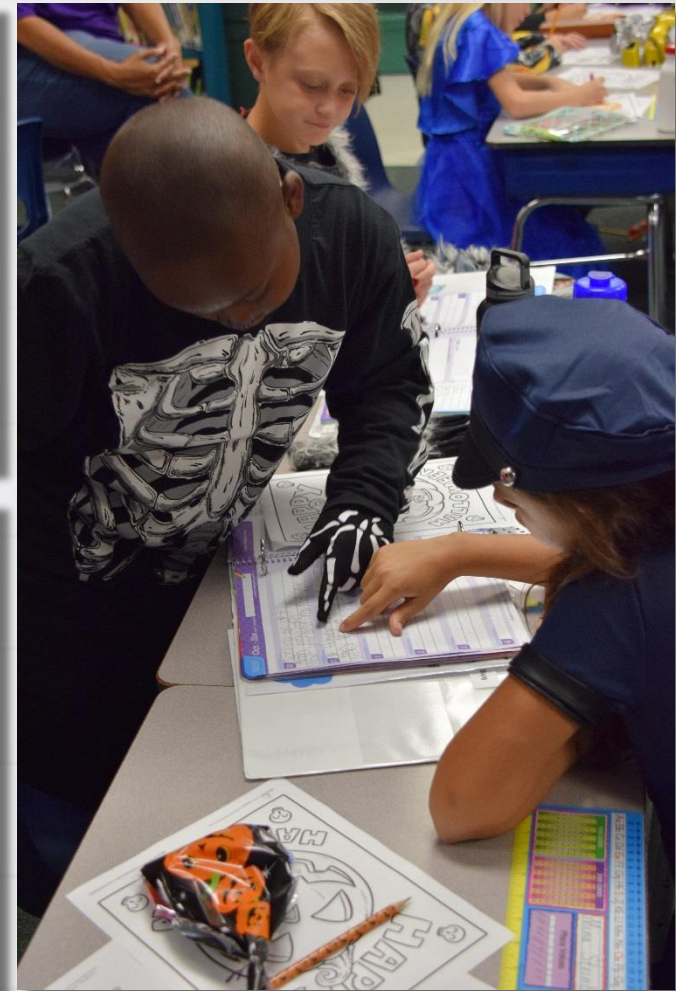
# Student Growth Rate



# Employment



# High Quality Education



# District Wins



## Microsoft Excel World Champion



# District Wins

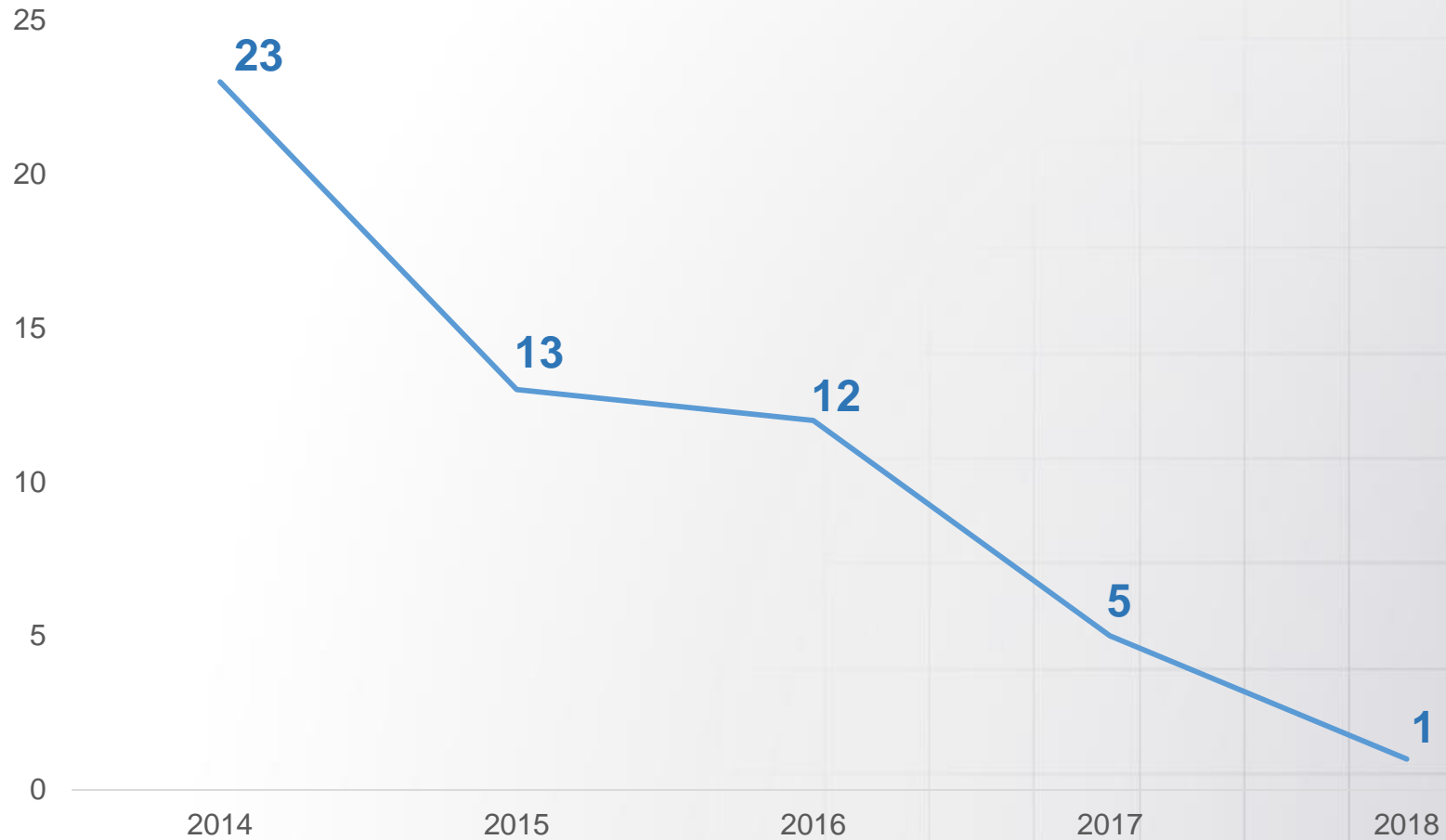
*Enhanced  
Rigor*

*Highest  
Graduation  
Rate*

*Increased  
Student  
Achievement*



# Schools in DA Status

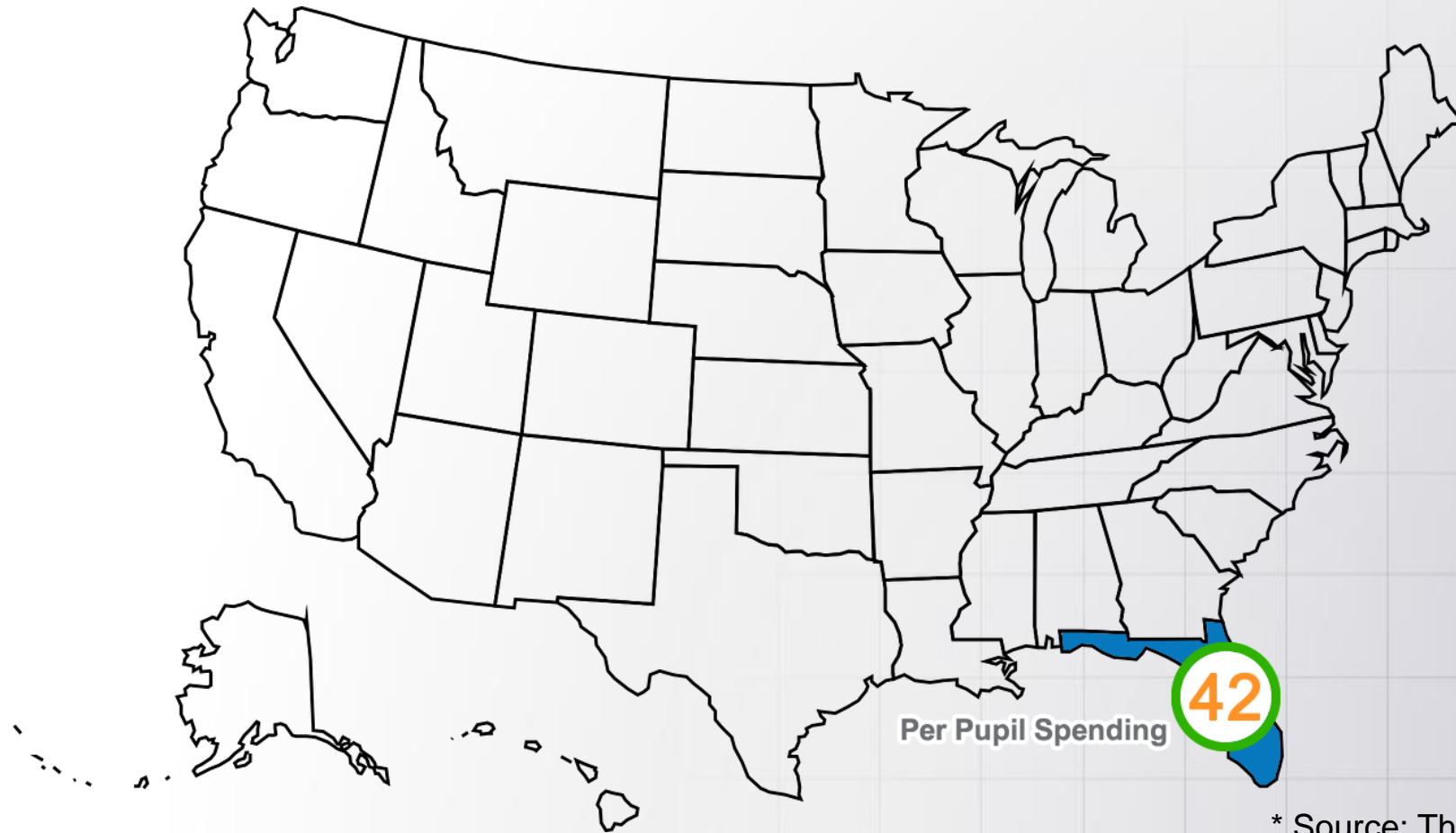


# State Spending



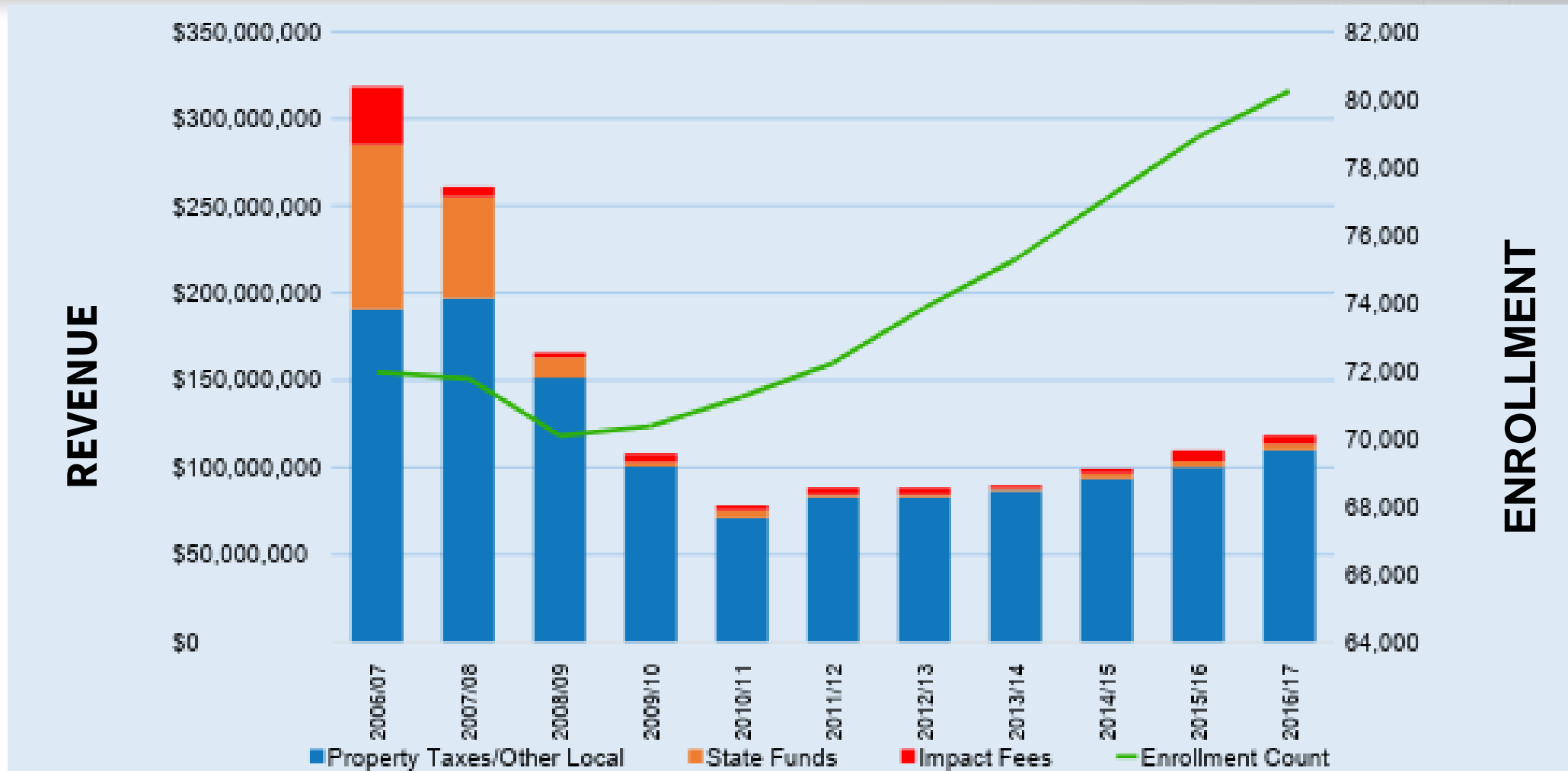
Source: NEA Research. (2015, March). Rankings of the States 2014 and Estimates of School Statistics 2015. Washington, D.C.: National Education Foundation.

# Per Pupil Spending

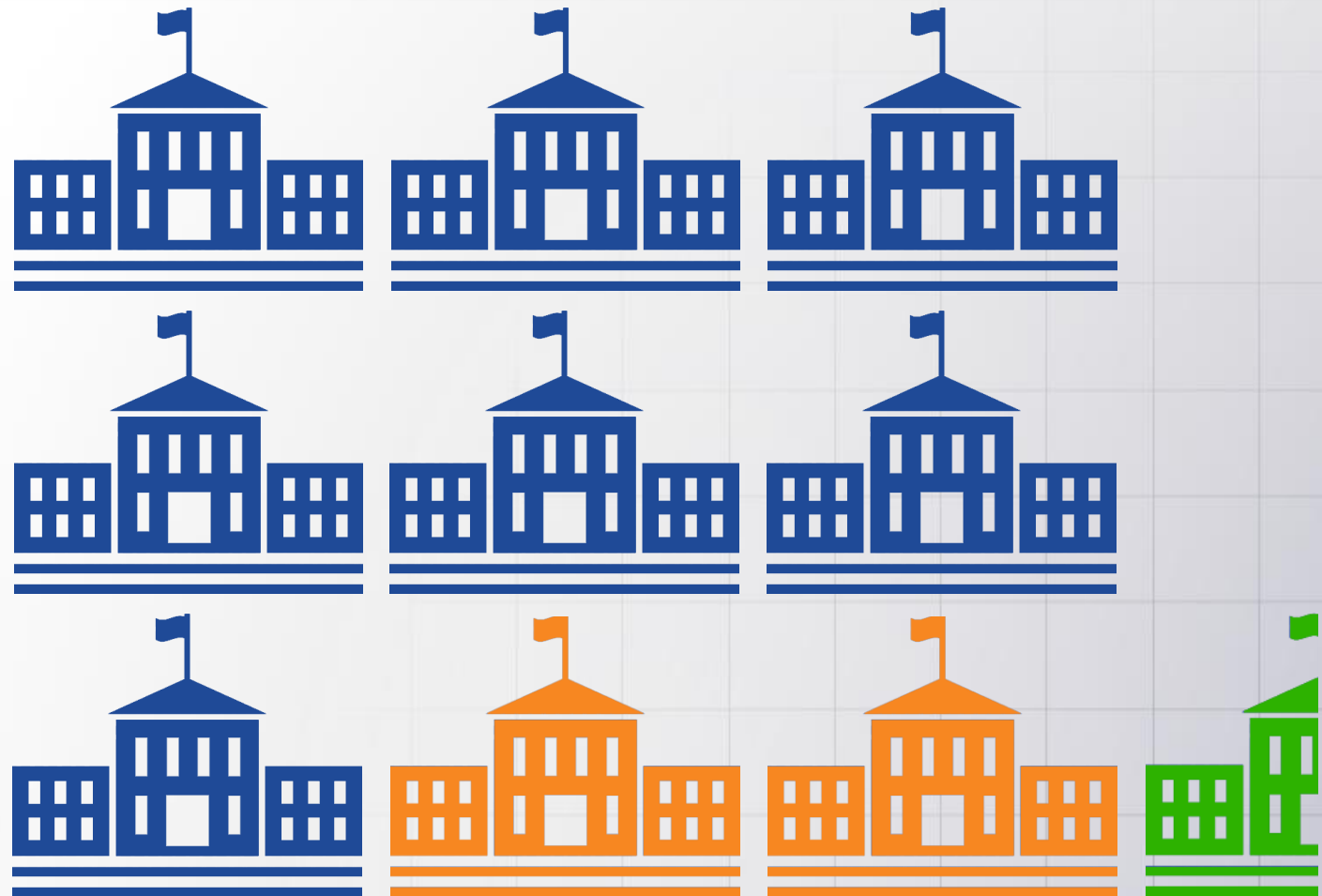


\* Source: TheStacker.com

# Capital Funding Overview



# Construction Need



# Maintenance Need

**799 buildings | 13M sq. ft. | 3,217 acres**



**885 Servers | 95 Networked Sites | 118,000 Computers**



# Consequences

*Portable classrooms,  
overcrowding & large  
class size*

*Borrowing more  
money,  
increasing debt*

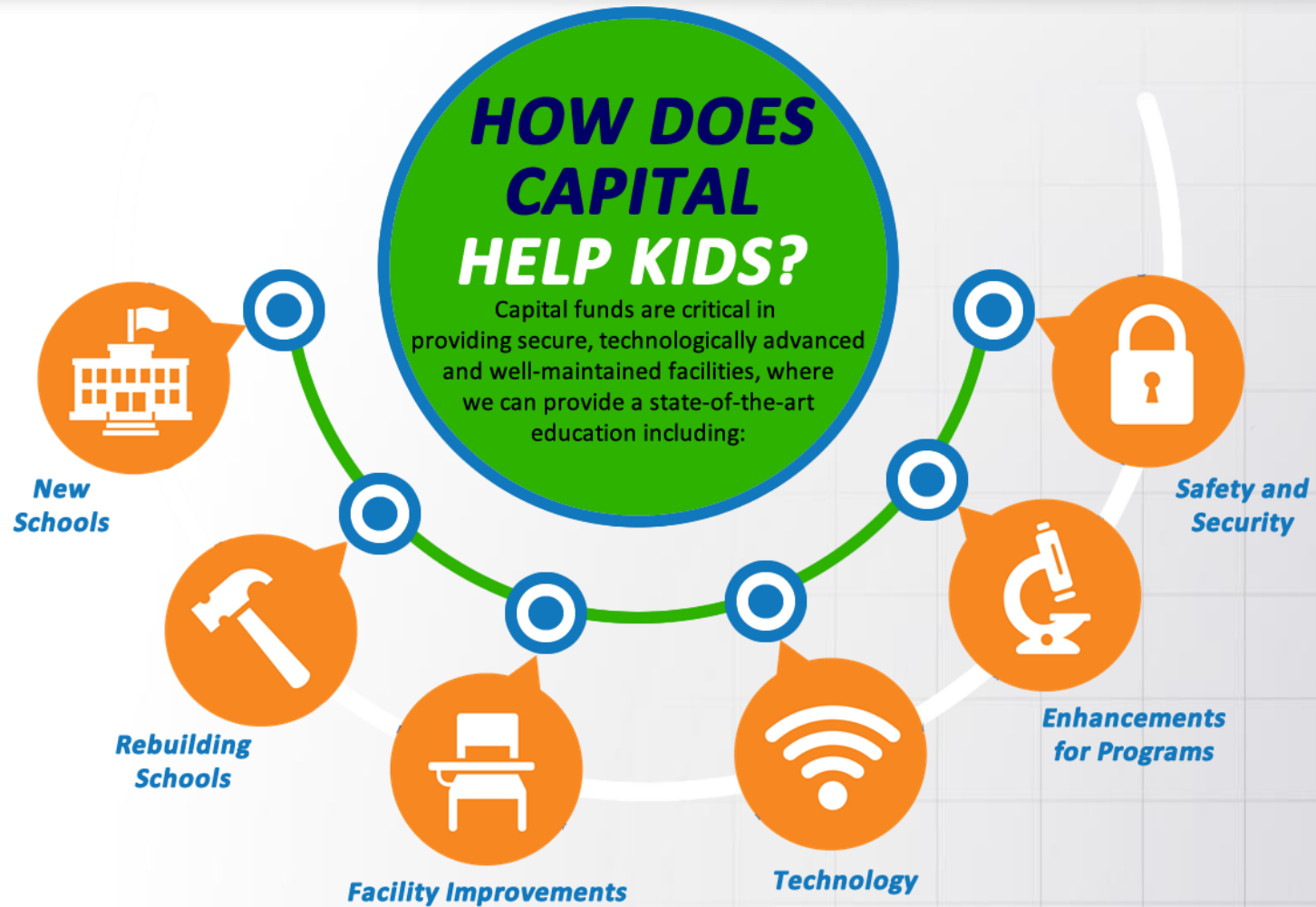
*Falling behind*



# Half-Cent Investment



# Capital Funds



# Half-Cent Investment

- Burden on taxpayers is low

Average family of  
four with \$50,000  
income  
**\$64/year**

Necessities like  
food and medicine  
**NOT taxed**

Surtax applies only  
to **first \$5000**  
of a purchase

# Half-Cent Investment

- Tourists contribute

*Burden **does not**  
fall solely on  
property owners*

*Between  
**25 and 35%**  
paid by tourists*

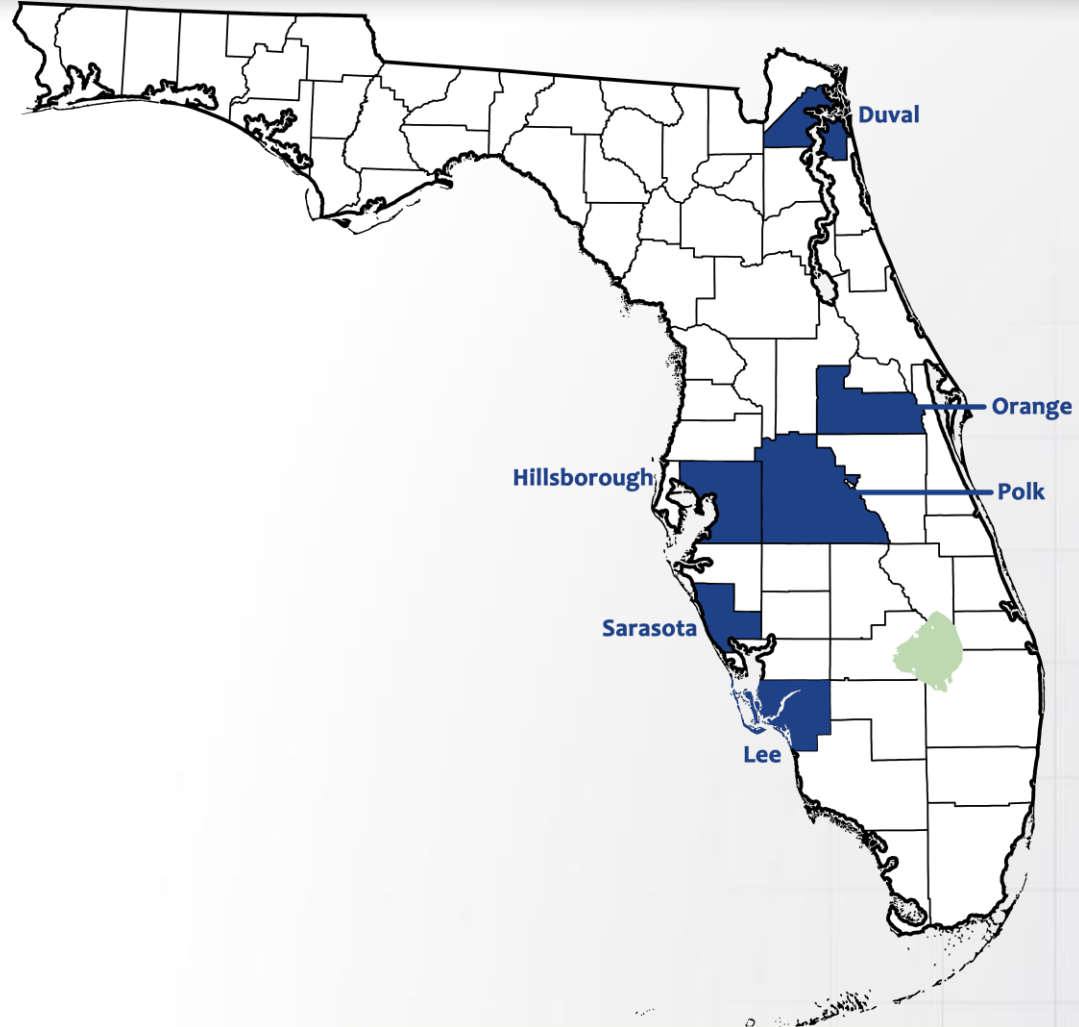
# Half-Cent Investment

- Raises more revenue than other options

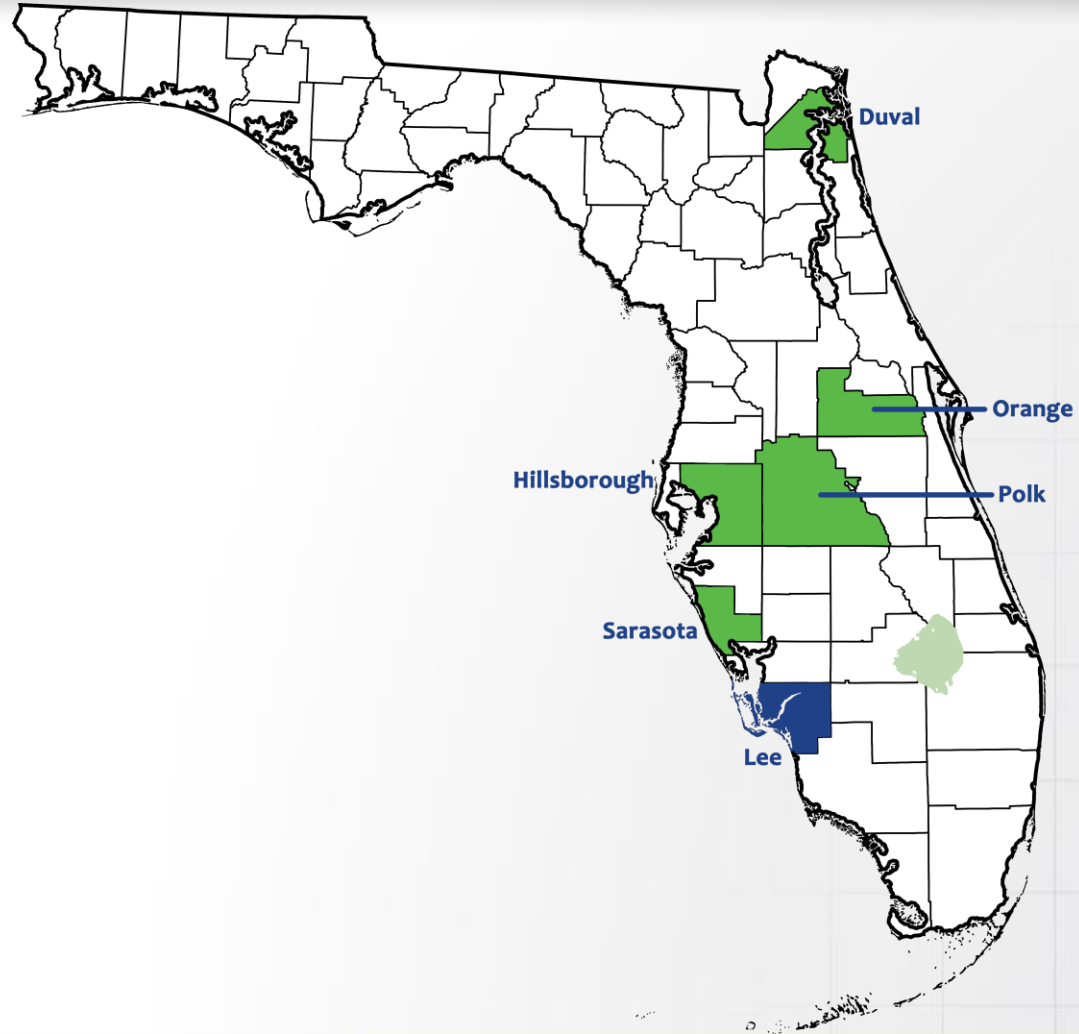
*Property tax=*  
*additional*  
*\$39 million/year*

*Sales tax=additional*  
*\$59 million/year*

# Florida Growth Counties



# Florida Growth Counties

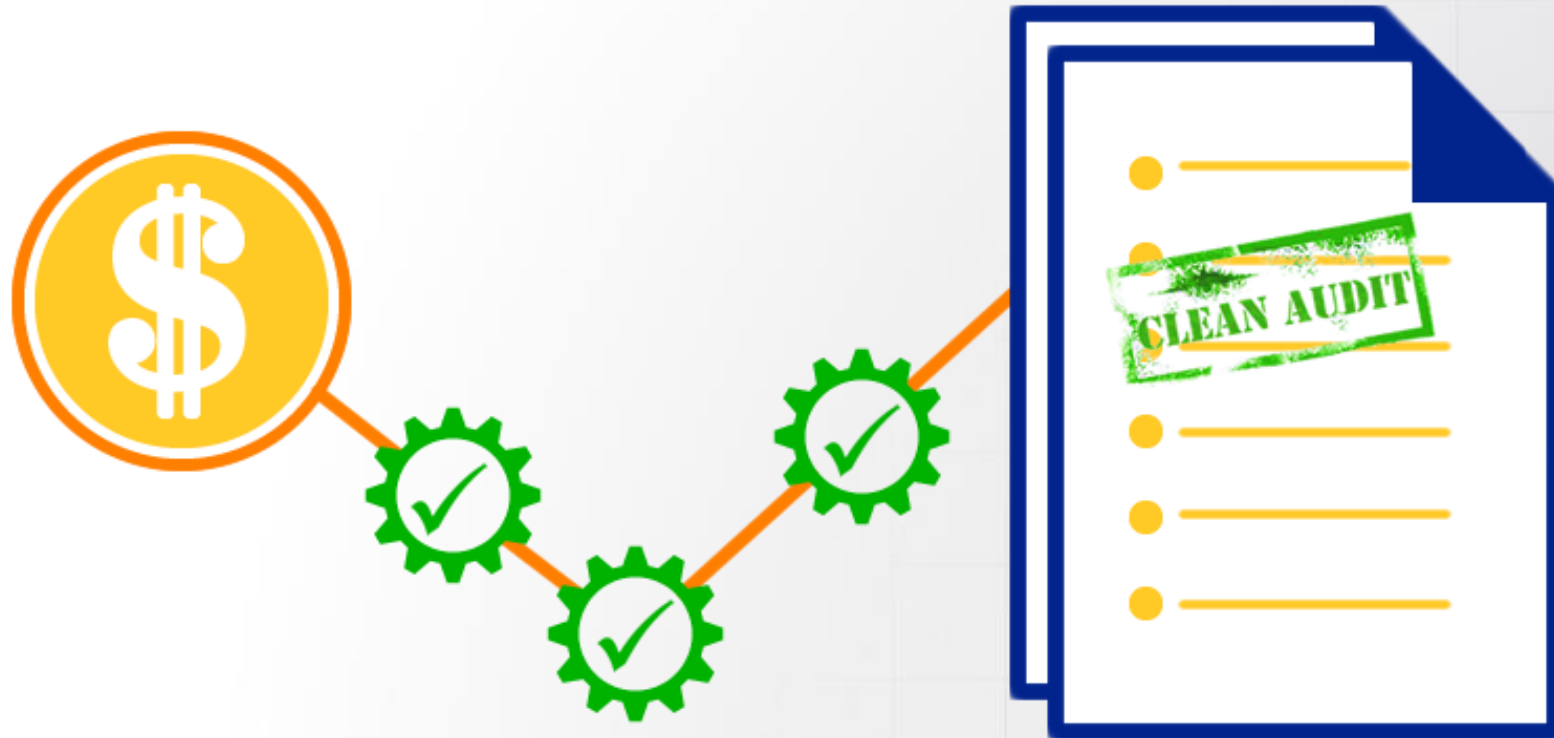


# Half-cent Investment





# Financial Transparency



# Financial Responsibility



# Financial Responsibility



# Bonita Springs High School



# Community Investment



# Building for the Future





[leeschools.net/change-for-change](https://leeschools.net/change-for-change)